



Moth Trapping Report

Summary

Location:	Green Cross Cottage, South Garden (TQ3615)
Date:	06/04/2026
Trap(s):	MV Robinson Trap
Recorders(s):	Chris Chapman
Moth Count:	31
Species Count: (see notes)	11 New for Year: 3 New for Location: 0 Total new species for Location this Year: 0 Species Count for Year: 32 Species Total for Location: 525
Non-species Count:	0
Notable Record Count:	1

Full List

NFY = New Species For Year

Species	Count	Type	Sussex Status	Comment
Brindled Beauty (<i>Lycia hirtaria</i>)	1	Macro	Common (1,801)	This relatively common species is single brooded occurring from early February to mid-May. Larvae feed on lime, oak & silver birch
Brindled Pug (<i>Eupithecia abbreviata</i>)	3	Macro	Common (4,025)	A relatively common resident species that generally flies from early March to late May. The larvae feed on oak.
Clouded Drab (<i>Orthosia incerta</i>)	5	Macro	Common (5,043)	A resident species generally well distributed. Single-brooded, flying mainly from late February to late May. Larvae feed on oak, willow, apple, white helleborine and hop.
Common Quaker (<i>Orthosia cerasi</i>)	4	Macro	Very Common (9,110)	A very common, resident species found in a wide range of habitats. Single-brooded, flying mainly from early February to late May. Larvae feed on birch, willow, oaks, lime, elm, bramble, rose, sweet chestnut, hawthorn and ash.
Early Grey (<i>Xylocampa areola</i>)	2	Macro	Common (6,249)	A common resident species found in a wide range of habitats. Primarily flies from late February to mid May. Larvae feed on honeysuckle.
Frosted Green (<i>Polyplocia ridens</i>)	4	Macro	Fairly Common (776)	A fairly common resident that is associated with Oak woods. Single-brooded, flying mainly from early April to mid May. Larvae feed on Oak.
Hebrew Character (<i>Orthosia gothica</i>)	8	Macro	Very Common (10,295)	A very common species. Single-brooded and flies mainly from early March to early June. Larvae feed on a large range of trees, shrubs and low-growing plants.
Powdered Quaker (<i>Orthosia gracilis</i>) NFY	1	Macro	Common (1,495)	A less common, resident species. Single-brooded,

Species	Count	Type	Sussex Status	Comment
				flying mainly from mid-March to late May. Larvae feed on a range of plants including loosestrife, meadow-sweet, dyer's greenwood and bog-myrtle.
Red-letter Flat-body (<i>Agonopterix ocellana</i>) ^{NFY}	1	Micro	Very Scarce (170)	
Small Quaker (<i>Orthosia cruda</i>)	1	Macro	Common (4,821)	A common species associated with deciduous woods. Single-brooded, flying from mid-February to late April. Larvae feed on oak, silver birch, willow, lime and rose.
Streamer (<i>Anticlea derivata</i>) ^{NFY}	1	Macro	Fairly Common (925)	A fairly common, resident species. Single-brooded, flying mainly from mid-April to late May. Larvae feed on wild rose.

Notable Records

Species	Comment
Red-letter Flat-body (<i>Agonopterix ocellana</i>)	A relatively scarce or rare species within Sussex; Likely to be only the 2nd time recorded in Plumpton & East Chiltington.

Images



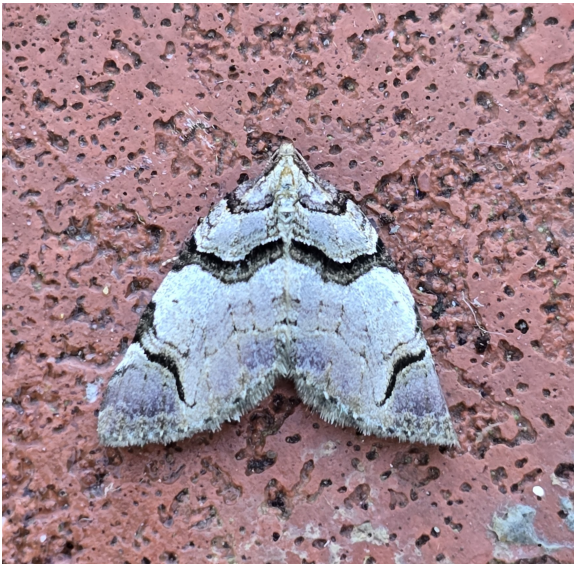
Frosted Green (*Polyphoca ridens*)



Powdered Quaker (*Orthosia gracilis*)



Red-letter Flat-body (*Agonopterix ocellana*)



Streamer (*Anticlea derivata*)

Notes

The numbers in the **Species Count** section of the **Summary** section only include moths that have been identified to species level.

You can see more details of each species from the [UK Moths website](#) by clicking on the name of the species. This doesn't apply to records at genus level or aggregates.

The Sussex Status is an **unofficial** indication of the likelihood of encountering the species in Sussex based on data sourced from the [Sussex Moth Group](#) website. The number in brackets is the minimum number of times the moth has been recorded in Sussex.

The species comments are primarily sourced from the excellent volumes of **A Revised History of the Butterflies and Moths of Sussex** by C R Pratt.

For further details of the records see [Green Cross Nature](#)

Produced by Chris Chapman ([Plumpton & East Chilington Wildlife Group](#))